



Roxtec CF 8/32 transit

High cable density transit with aluminum frame.

The Roxtec CF 8 and CF 32 cable entry seals have frames of cast aluminum and sealing modules which are adaptable to a variety of cable sizes.



- Rodent resistant
- Light-weight
- Area efficient
- Allows pre-terminated cables

Product characteristics



IP/UL NEMA

Structure of installation



Cabinets & enclosures

Mounting type



Bolting

Ratings & certificates

Tightness

- IP 66/67, UL/NEMA 4,4X,12,13

Frame dimensions

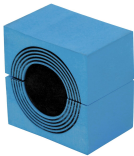
mm/kg

The frame variants below are a limited selection. For the full range of frames and configurations, please visit [roxtec.com](https://www.roxtec.com).

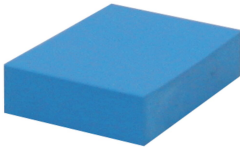
| Product | Frame openings | Packing space | External dimensions WxHxD | Aperture dimensions w x h | Weight | Art. no |
|---------|----------------|---------------|------------------------------|---------------------------------|--------|---------------|
| CF 8 | 1 | 40 x 80 | 75 x 140 x 60 | 61(+0.5/-0.5) x 127(+0.5/-0.5) | 0.6 | CSF0000080035 |
| CF 32 | 2 | 40 x 160 | 130 x 230 x 60 | 110(+0.5/-0.5) x 216(+0.5/-0.5) | 1.4 | CSF0000320035 |

Sealing components

Sealing components



CM module with Multidiameter™



CM solid compensation module


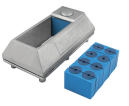

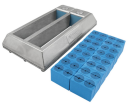
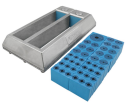



Lubricant

For detailed information, please visit [roxtec.com](https://www.roxtec.com).

Pre-configured transit kits

mm/kg

|  |  |  |  |  |  |
|--|---|---|---|---|---|
| CF 8/5 | CF 8/8 | CF 32/20 | CF 32/32 | CF 32/41 | CF 8/9 |
| Product | Configuration | External dimensions WxHxD | Aperture dimensions w x h | Weight | Art. no |
| CF 8/5 | 1x (9.5-32.5), 4x (3.5-16.5) | 75 x 140 x 59 | 61(+0.5/-0.5) x 127(+0.5/-0.5) | 0.8 | CKT8000000005 |
| CF 8/8 | 8x (3.5-16.5) | 75 x 140 x 59 | 61(+0.5/-0.5) x 127(+0.5/-0.5) | 0.8 | CKT8000000008 |
| CF 32/20 | 4x (9.5-32.5), 16x (3.5-16.5) | 130 x 230 x 59 | 110(+0.5/-0.5) x 216(+0.5/-0.5) | 2 | CKT3200000020 |
| CF 32/32 | 32x (3.5-16.5) | 130 x 230 x 59 | 110(+0.5/-0.5) x 216(+0.5/-0.5) | 2 | CKT3200000032 |
| CF 32/41 | 1x (9.5-32.5), 24x (3.5-10.5), 16x (3.5-16.5) | 130 x 230 x 59 | 110(+0.5/-0.5) x 216(+0.5/-0.5) | 2 | CKT3200000041 |
| CF 8/9 | 2x (3.5-16.5), 1x (10.0-25.0), 6x (3.5-10.5) | 75 x 140 x 59 | 61(+0.5/-0.5) x 127(+0.5/-0.5) | 0.8 | CKT0000000009 |

The product information provided by Roxtec does not release the purchaser of the Roxtec system, or part thereof, from the obligation to independently determine the suitability of the products for the intended process, installation and/or use.

Roxtec gives no guarantee for the Roxtec system or any part thereof and assumes no liability for any loss or damage whatsoever, whether direct, indirect, consequential, loss of profit or otherwise, occurred or caused by the Roxtec systems or installations containing components not manufactured by an authorized manufacturer and/or occurred or caused by the use of the Roxtec system in a manner or for an application other than for which the Roxtec system was designed or intended.

Roxtec expressly excludes any implied warranties of merchantability and fitness for a particular purpose and all other express or implied representations and warranties provided by statute or common law. User determines suitability of the Roxtec system for intended use and assumes all risk and liability in connection therewith. In no event shall Roxtec be liable for indirect, consequential, punitive, special, exemplary or incidental damages or losses.

The Roxtec products are offered and sold in accordance with the conditions of the Roxtec General Terms of Sales. The latest version of the Roxtec General Terms of Sales can be downloaded from <https://www.roxtec.com/en/about-us/about-roxtec/general-terms-of-sales/>

We reserve the right to make changes to the product and technical information without further notice. Any errors in print or entry are no claims for indemnity. The content of this publication is the property of Roxtec International AB and is protected by copyright.

This document was generated on: 2024-04-27